

Light efficiency:

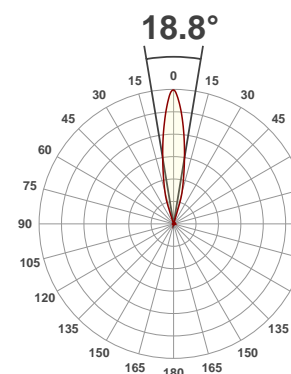
71 Lumen/Watt

Light quality:

CRI: 90.6

Color temperature:

5713 K



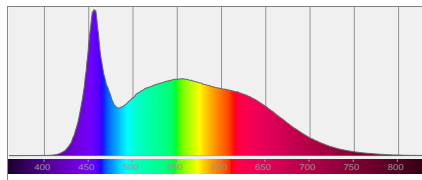
Product name:
CW Profile HP

Test:
36Deg Zoom In

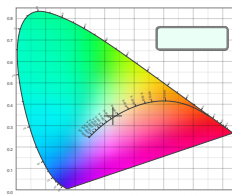
Date:
9/7/2017

Output: 10574 lm Power consumption: 149 W Peak: 87957 cd

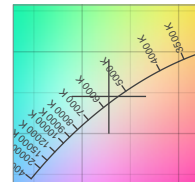
Spectral distribution



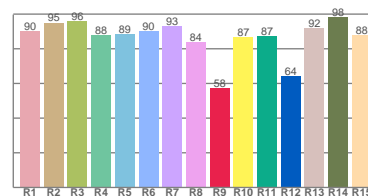
Color coordinates



Zoom color point

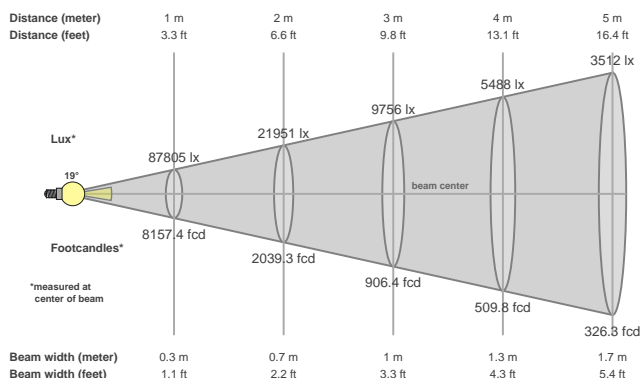


CRI R values



Color temperature	Color rendering index	Red component	Color fidelity	Color gamut	Color quality scale	Color coordinate cie 1931	Color coordinate cie 1931	Color coordinate	Color coordinate	Color divition from black body
CCT	CRI	CRI R9	TM30 Rf	TM30 Rg	CQS	x	y	u	v	Δuv
5713 K	90.6	57.6	86.3	95.5	88.3	0.328	0.345	0.202	0.319	0.0010

Beam details



Beam angles

Beam angle 50%	Field angle 10%	Cutoff angle 2,5%
18.8°	34.3°	35.3°

Beam intensities

Peak intensity	Int. ratio in 120° cone	Int. ratio in 90° cone
87957 cd	98.2%	98.0%

Power

Power	Power factor	Power frequency
149 W	1.0	60 Hz

Nominal voltage	Voltage	Current
230 V	113 V	1.33 A

Beam intensities from 1-20m

1m	2m	3m	4m	5m	6m	7m	8m	9m	10m	11m	12m	13m	14m	15m	16m	17m	18m	19m	20m
3.3ft	6.6ft	9.8ft	13.1ft	16.4ft	19.7ft	23ft	26.2ft	29.5ft	32.8ft	36.1ft	39.4ft	42.7ft	45.9ft	49.2ft	52.5ft	55.8ft	59.1ft	62.3ft	65.6ft
87805lx	21951lx	9756lx	5488lx	3512lx	2439lx	1792lx	1372lx	1084lx	878lx	726lx	610lx	520lx	448lx	390lx	343lx	304lx	271lx	243lx	220lx
8157.4fcd	2039.3fcd	906.4fcd	509.8fcd	326.3fcd	226.6fcd	166.5fcd	127.5fcd	100.7fcd	81.6fcd	67.4fcd	56.6fcd	48.3fcd	41.6fcd	36.3fcd	31.9fcd	28.2fcd	25.2fcd	22.6fcd	20.4fcd